

**'Kpa 'pe na kalanga**  
Gandja na Mbia



**2016**

**Calendrier de l'an 2016 avec lecteur de la Bible**

© 2015, Projet de Traduction de la Bible et  
Alphabétisation en langue Mayogo  
CITBA/PROJET MAYOGO ISIRO, RDC

Calendrier de l’an 2016 avec passages bibliques quotidiens vous aide a lire intégralement “Gandja na Mbia” Nouveau Testament en Mayogo, livre sacré tant attendu non seulement par les locuteurs Mayogo mais aussi par tous ceux qui, de près ou de loin ont contribué à sa réalisation en acte et ferventes prières. Il contient des des versets clé et des proverbes en mayogo pour chaque mois. Vos critiques ont toujours contribué à l’amélioration de nos ouvrages. Nos sincères remerciements à tous les utilisateurs de cet outil précieux.

Merci à la SIL/TSC pour les images et toutes les actions au développement de la langue Mayogo.

© 2015, **Projet de Traduction de la Bible et Alphabétisation en Mayogo**

**Première édition 2013, 500 copies**

**Imprimé en République Démocratique du Congo**  
**Distribution: Bureau du Projet Mayogo**  
**B.P. 500 Isiro R.D.C**

*mayogo\_project@sil.org    Tél. +243819476430*  
*+243994080085*  
*nsinilide@rocketmail.com*

☺

- ◆ Classe d’alphabé- tisation
- ◆ Atelier des Ecrivains
- ◆ Club des Jeunes Ecrivains Mayogo
- ◆ Atelier des Ecrivains mayogo
- ◆ Formation des Al- phabétiseurs
- ◆ Formation des Promoteurs de Saintes Ecritures ...

3

M  
a  
y  
o  
g  
o  
P  
r  
o  
j  
e  
t  
d  
e  
T  
r  
a  
d  
u  
c  
t  
i  
o  
n  
d  
e  
l  
a  
B  
i  
b  
l  
e  
e  
t  
d  
e  
l  
a  
B  
i  
b  
l  
i  
o  
t  
h  
è  
q  
u  
e  
d  
e  
M  
a  
y  
o  
g  
o

**‘Ili (Nom):**.....

**Kalanga nazu (Date de naissance):**.....

**Bili nadu (Adresse) :**.....

**Kulu (Profession) :**.....

**TELEFONE (Téléphone) :**.....

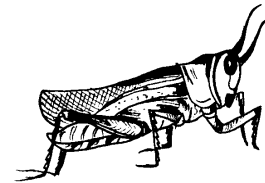
**Kuliele (Courriel) :**.....

# Epe na bini/janvier 2016



Bin	Bhis	Bat	Badh	Bhu	Madh	Yinga
31					Bunan 1 Mt 1	2 Mt 2
3 Mt 3	Tanaamapí 4 Mt 4	5 Mt 5:1-26	6 Mt 5:27-48	7 Mt 6	8 Mt 7	9 Mt 8
10 Mt 9:1-17	11 Mt 9:18-38	12 MT 10:1-23	13 Mt 10:24-42	14 Mt 11	15 Mt 12:1-21	16 Mt 12:22-50
17 Mt 13:1-32	18 Mt 13:33-58	19 Mt 14:1-21	20 Mt 14:22-36	21 Mt 15:1-20	22 Mt 15:21-39	23 Mt 16
24 Mt 17	25 Mt 18:1-20	26 Mt 18:21-35	27 Mt 19:1-15	28 Mt 19:16-30	29 Mt 20:1-16	30 Mk 20:17-4

*Yi leke kpadji gba Ngámá-0.  
Matie 3:3*

*Yi leke bua yi  
ngú nago ka ani-0.*



*'Kpa 'ndjikpa apise bha me ande ati. Ebi gba bhasa ati agba makula e.*

Opkí koko nago na Epe na bini
• 16/1 Nakpi ka P. L. D. KABILA
• 17/1 Nakpi ka E. P. LUMUMBA



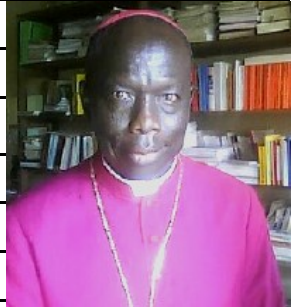
# Epe na bhisifévrier 2016

Bin	Bhis	Bat	Badh	Bhu	Madh	Yinga
1 <small>Mt 21:23-46</small>	2 <small>Mt 22:1-22</small>	3 <small>Mt 22:33-46</small>	4 <small>Mt 23:1-22</small>	5 <small>Mt 23:23-39</small>	6 <small>Mt 24:1-22</small>	7 <small>Mt 24:23-</small>
8	9 <small>Mt 25:1-30</small>	10 <small>Mt 25:31-46</small>	11 <small>Mt 26:1-19</small>	12 <small>Mt 26:20-54</small>	13 <small>Mt 26:55-57</small>	14 <small>Mt 27:1-31</small>
15	16 <small>Mt 28:1-20</small>	17 <small>Mk 1:1-22</small>	18 <small>Mk 1:23-45</small>	19 <small>Mk 2</small>	20 <small>Mk 3:1-21</small>	21 <small>Mk 3:22-35</small>
22	23 <small>Mk 4:21-41</small>	24 <small>Mk 5:1-20</small>	25 <small>Mk 5:21-43</small>	26 <small>Mk 6:1-32</small>	27 <small>Mk 6:33-56</small>	28 <small>Mk 7:1-13</small>
29						



Djaa 3:3

<< Ma apa pi mu na paká me,  
kpála bini ti da nau,  
Nau gba Ebhe-e de,  
\* da me u nde zu ani ne toto de ko. >>



S.E Mgr Evêque Julien ANDAVO

Président de C.A/CITBA

Région d'Isiro

'Li 'ba bini zi mú bhú kulubhe de. Kpulate zu gbanya de.

# Epe na bata/mars 2016

Bin	Bhis	Bat	Badh	Bhu	Madh	Yinga
Embi	1 Mk 8:22-38	2 Mk 9:1-29	3 Mk 9:30-50	4 Mk 10:1-31	5 Mk 10:32-52	6 Mk 11:1-19
7 Mk 11:20-	Olisi 8 33	9 Mk 12:1-27	10 Mk 12:28-44	11 Mk 13:1-13	12 Mk 13:14-37	13 Mk 14:1-25
14	15	16 Mk 14:51-72	17 Mk 15:1-26	18 Mk 15:27-47	19 Mk 16	Kpá Ngu- 20 Lk 1:1-23
21 Lk 1:24-56	22	23 Lk 2:1-24	24 Lk 2:25-52	25 Lk 3	26 Lk 4:1-32	Pasika 27 Lk 4:33-44
28 Lk 5:1-16	29	30 Lk 6:1-26	31 Lk 6:27-49			








Øle ne dipa sungu. Tsangba kpata ngua.

# Epe na badha/avril 2016

Bin	Bhis	Bat	Badh	Bhu	Madh	Yinga
					1 Lk 8:1-23	2 Lk 8:22-56
3 Lk 9:1-36	4 Lk 9:37-62	5 Lk 10:1-24	6 Lk 10:25-42	7 Lk 11:1-28	8 Lk 11:29-54	9 Lk 12:34
10 Lk 12:35-59	11 Lk 13:1-21	12 Lk 13:22-35	13 Lk 14:1-24	14 Lk 14:25-39	15 Lk 15:1-10	16 Lk 15:11-32
17 Lk 18:1-18	18 Lk 18:19-31	19 Lk 17:1-19	20 Lk 17:20-37	21	22 Lk 18:1-17	23 Lk 18:18-
24 43	25	26 Lk 19:29-48	27 Lk 20:1-26	28 Lk 20:27-47	29 Lk 21:1-19	30 Lk 21:20-30



Couple R.P J.D. MODIBALE

V/P de C.A/ CITBA

Région d'Isiro

Représentante de la SIL/ECG



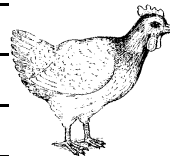
Kulu ne 'kpa. Mene kulu 'o kozie ne 'ndu bilit.

# Epe na bhuluvue/mai 2016

Bin	Bhis	Bat	Badh	Bhu	Madh	Yinga
				<b>Kulu 1</b> Lk 22:54-71	<b>2</b> Lk 23:1-20	<b>3</b> Lk 23:27-
<b>4</b> Lk 23:39-	<b>Na'á 5</b> 56	<b>6</b>	<b>7</b> Lk 24:1-35	<b>8</b> Lk 24:36-53	<b>9</b> Dj 1:1-28	<b>10</b> Dj 1:29-51
<b>11</b> Dj 2	<b>12</b>	<b>13</b> Dj 3:22-36	<b>14</b> Dj 4:1-30	<b>Patekote 15</b> Dj 4:31-54	<b>16</b> Dj 5:1-24	<b>17</b> Dj 5:25-47
<b>18</b> Dj 6:1-21	<b>19</b>	<b>20</b> Dj 6:45-71	<b>21</b> Dj 7:1-31	<b>22</b> Dj 7:32-53	<b>23</b> Dj 8:1-20	<b>24</b> Dj 8:21-36
<b>25</b> Dj 8:37-59	<b>26</b>	<b>27</b> Dj 9:24-41	<b>28</b> Dj 10:1-21 T	<b>29</b> Dj 10:22-42	<b>30</b> Dj 11;1-17	<b>31</b> Dj 1:18-48



17/05 Libération  
De RDC par  
AFDL



**Rev. Past. ADABUANE NDEGU**  
Traducteur, 1996



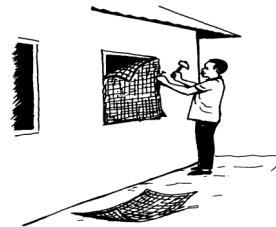
**Ngámá kpo bhú 'mbi. Pala 'ngu gbo 'hi e de.**

# Epe na madhia/juin 2016

Bin	Bhis	Bat	Badh	Bhu	Madh	Yinga
Edepandasi		1 Dj 12:20-50	2 Dj 13:1-17	3 Dj 13:18-38	4 Dj 14	<b>Na' 5</b> Dj 15
6 Dj 16:1-15	7 Dj 16:16-33	8 Dj 17	9 Dj 18:1-23	10 Dj 18:24-40	11 Dj 19:1-22	<b>Patekte 12</b> Dj 19:23-42
13 Dj 20	14 Dj 21	15 Kl 1	16 Kl 2:1-13	17 Kl 2:14-47	18 Kl 3	<b>19</b> Kl 4:1-22
20 Kl 4:23-37	21 Kl 5:1-16	22 Kl 5:17-42	23 Kl 6	24 Kl 7:1-19	25 Kl 7:20-43	<b>26</b> Kl 7:44-60
27 Kl 8:1-25	28 Kl 8:26-40	29 Kl 9:1-22	Edepandasi 30 Kl 9:23-43			<b>14</b>

Ma a'o pi yi guo 'ngú. Ma aha guo 'ngú gba pi yi. Ma ha pi yi maka li okpála na p'la doto ngaha-ha lie de. Kaka-a, yi a'ó bua yi abhúlá de. Yi adjé la di tsulá de.

*Djaa 14:27*



**Kuti nga ne kpála. Biti ne gbá 'gú.**

30/06: Indépendance de la RDC



**Théophile TONGU NEISA**  
Alphabétiseur, 1996



# Epe na mananika/juillet 2016

Bin	Bhis	Bat	Badh	Bhu	Madh	Yinga
31				1 KI 10:1-23	2 KI 10:24-48	3 KI 11
4 KI 12	5 KI 13:1-23	6 KI 13:24-52	7 KI 14	8 KI 15:1-21	9 KI 15:22-41	10 KI 16:1-15
11 KI 16:16-40	12 KI 17:1-15	13 KI 17:16-34	14 KI 18	15 KI 19:1-20	16 KI 19:21-41	17 KI 20:1-16
18 KI 20:17-38	19 KI 21:1-14	20 KI 21:16-40	21 KI 22	22 KI 23:1-11	23 KI 23:12-35	24 KI 24
25 KI 25	26 KI 26	27 KI 27:1-25	28 KI 27:26-44	29 KI 28:1-15	30 KI 28:16-31	31 Rm 1 16



Ngámá Maurice

TONGOLOIII

Collectivité Mayogo Maboza


 Ngusu go bhú 'bhe me ezú nde kuto. U ku ndili ne tambe de.
 

# Epe na madjina/août 2016

Bin	Bhis	Bat	Badh	Bhu	Madh	Yinga
1 Lm 2	2 Lm 3	3 Lm 4	4 Lm 5 Lm 6	5 Lm 7	6 Lm 8:1-18	7 Lm 8:1-18
8 1 Klt 8:19-39	9 Lm 9	10 Lm 10	11 Lm 11:1-21	12 Lm 11:22-36	13 Lm 12	14 Lm 13
15 Lm 14	16 Lm 15:1-20	17 Lm 15:21-33	18 Lm 16	19 1 Klt 1	20 1 Klt 2	21 1 Klt 3
22 1 Klt 4	23 1 klt 5	24 1 Klt 6	25 1 Klt 7:1-24	26 1 Klt 7:25-	27 40	28 1 Klt 8
29 Klt 9	30 1 Klt 10:1-13	31 1 Klt 10:14-				

18



Past. ABULE KPINELIEDE

Secrétaire de CA/CITBA

Région d'ISIRO



Tia kpála ko mangimbo. A ako tsie ka 'ngi!

20  
19

# Epe na odukpabini/septembre 2016

Bin	Bhis	Bat	Badh	Bhu	Madh	Yinga
			1 1 KI 11:16-	2 34	3 1 Kol 12	4 1 KI 13
5	6 1 KI 14:21-40	7 1 KI 15:1-32	8 1 KI 33:58	9 1 KI 16	10 2 KI 1	11 2 KI 2
12	13 2 KI 4	14 2 KI 5	15 2 KI 6	16 2 KI 7	17 2 KI 8	18 2 KI 9
19	20 2 KI 11:1-15	21 2 KI 11:16-33	22 GI 1	23 GI 2	24 GI 3	25 GI 4
26	27 GI 6	28 Ef 1	29 Ef 2	30 Ef 3		20



Kozie li betse. Kɔbhi gbele bha pi betse.

# Epe na ndjikpa/octobre 2016

Bin	Bhis	Bat	Badh	Bhu	Madh	Yinga
31 <small>2 Tt 1</small>					1 <small>Ef 3</small>	2 <small>Ef 4</small>
3 <small>Ef 5</small>	4 <small>Ef 6</small>	5 <small>Fl 1</small>	6 <small>Fl 2</small>	7 <small>Fl 3</small>	8 <small>Fl 4</small>	9 <small>Kls 1</small>
10 <small>Kls 2</small>	11 <small>Kls 3</small>	12 <small>Kls 4</small>	13 <small>1 Ts 1</small>	14 <small>1 Ts 2</small>	15 <small>Ts 3</small>	16 <small>Bádha Ngali 1 Ts 4</small>
17 <small>1 Ts 5</small>	18 <small>2 Ts 1</small>	19 <small>2 Ts 2</small>	20 <small>2 Ts 3</small>	21 <small>1 Tm 1</small>	22 <small>1 Tm 2</small>	23 <small>1 Tm 3</small>
24 <small>1 Tm 4</small>	25 <small>1 Tm 5</small>	26 <small>1 Tm 6</small>	27 <small>2 Tm 1</small>	28 <small>2 Tm 2</small>	29 <small>2 Tm 3</small>	30 <small>2 Tm 4</small>

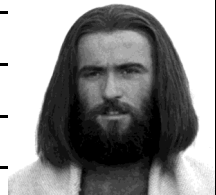


A li túlu ne 'dje e. Dje 'kpí de kina lie.



Past. MŪWAY ADHO

Retraducteur, 2001



# Epe na ndjikpa ne 'ká bini/novembre 2016

Bin	Bhis	Bat	Badh	Bhu	Madh	Yinga
	Obububu Tt 2	2 Tt 3	3 Fm 1	4 Eb 1	5 Eb 2	6 Eb 3
7 Eb 4	8 Eb 5	9 Eb 6	10 Eb 7	11 Eb 8	12 Eb 9	13 Eb 10:1-23
14 Eb 10:24-	15 39	16 Eb 11:1-19	17 Eb 11:20	18 -40	19 Eb 12	20 Eb 13
21 Djk 1	22	23 Djk 3	24 Djk 4	25 Djk 5	26 1Pi 1	27 1Pi 2
28 1Pi 3	29	30 1Pi 5				



SINILIDE NGUWAY ABUSA

Alphabétiseur, 1993



U ɛ ngámá ka 'gú de. Egú bala linga.

# Epe na ndjikpa ne 'ká bhisí/décembre 2016

Bin	Bhis	Bat	Badh	Bhu	Madh	Yinga
			Anuarite 1 2Pi 3	2 1Dj 1	3 1Dj 2	4 1Dj 3
5 1Dj 4	6 1Dj 5	7 2Dj 1	8 3Dj 1	9 Yd	10 Ap 1	11 Ap 2
12 Ap 3	13 Ap 4	14 Ap 5	15 Ap 6	16 Ap 7	17 AP 8	18 Ap 9
19 Ap 10	20 Ap 11	21 Ap 12	22 Ap 13	23 Ap 14	24 Ap 15	Nuele 25 Ap 16 Ap 17
26 Ap 18	27 Ap 19	28 Ap 20	29 Ap 21	30 Ap 22	31	26



Rév. Past. KOKOLE IDRING

Prés. Com. De la CECA 20

CA/CITBA

Région d'Isiro



Li búlu du nagbe-o, amba makula ani kele ani. Gbende go 'ndje 'la.

**Epe na bini/janv. 2017**

bi	bh	bt	bd	bh	md	YI
1	2	3	4	5	6	7
8	9	10	11	12	13	14
15	16	17	18	19	20	21
22	23	24	25	26	27	28
29	30	31				

**Epe na bhisi/fév.2017**

bi	bh	bat	bd	bh	m	YI
					d	
		1	2	3	4	5
6	7	8	9	10	11	12
13	14	15	16	17	18	19
20	21	22	23	24	25	26
27	28					

**Epe na bata/mars 2017**

bi	bh	bt	bd	bh	md	YI
		1	2	3	4	5
6	7	8	9	10	11	12
13	14	15	16	17	18	19
20	21	22	23	24	25	26
27	28	29	30	31		

**Epe na badha/avril 2017**

bi	bh	bt	bd	bh	md	YI
					1	2
3	4	5	6	7	8	9
10	11	12	13	14	15	16
17	18	19	20	21	22	23
24	25	26	27	28	29	30

**Epe na bhuluvue/mai 2017**

bi	bh	bt	bd	bh	md	Y
						I
		1	2	3	4	5
6	7	8	9	10	11	12
13	14	15	16	17	18	19
20	21	22	23	24	25	26
27	28	29	30	31		

**Epe na madhia/juin 2017**

bi	bh	bt	bd	bh	md	YI
					1	2
					3	
4	5	6	7	8	9	10
11	12	13	14	15	16	17
18	19	20	21	22	23	24
25	26	27	28	29	30	<sup>28</sup>
						<sup>29</sup>

**Epe na mananika/juil. 2017**

bi	bh	bt	bd	bh	md	YI
					1	2
3	4	5	6	7	8	9
10	11	12	13	14	15	16
17	18	19	20	21	22	23
24	25	26	27	28	29	30
31						

**Epe na madjina/aout 2017**

bi	bh	bt	bd	bh	md	YI
					1	2
					3	4
					5	6
7	8	9	10	11	12	13
14	15	16	17	18	19	20
21	22	23	24	25	26	27
28	29	30	31			

**Epe na odupabini/sept. 2017**

bi	bh	bt	bd	bh	md	YI
					1	2
					3	
4	5	6	7	8	9	10
11	12	13	14	15	16	17
18	19	20	21	22	23	24
25	26	27	28	29	30	

**Epe na ndjikpa/oct. 2017**

bi	bh	bt	bd	bh	md	YI
30	31					1
2	3	4	5	6	7	8
9	10	11	12	13	14	15
16	17	18	19	20	21	22
23	24	25	26	27	28	29

**Epe na ndjikpa ne "ká bini/nov. 2017**

bi	bh	bt	bd	bh	md	YI
					1	2
					3	4
					5	
6	7	8	9	10	11	12
13	14	15	16	17	18	19
20	21	22	23	24	25	26
27	28	29	30			

**Epe na ndjikpa ne "ká bhisi/déc. 2017**

bi	bh	bt	bd	bh	md	YI
31						1
						2
						3
4	5	6	7	8	9	10
11	12	13	14	15	16	17
18	19	20	21	22	23	24
25	26	27	28	29	30	

**LELE NABHUNDJA PINDJI ELI GBA EBHE-E  
MA BHOTO BHOTO**

- A) D<sub>u</sub> nd<sub>u</sub> ‘kpí hana má pakili lí bili bini.
- B) Yo Ebhe me ani gie engú pí m<sub>u</sub> má kpe! Lí engú u ayi e inde Ani bhulu djila m<sub>u</sub> ngú nambila ngamba ‘ngú bhá lílí gba e-o.
- C) Bhulu bhuku gba m<sub>u</sub>-o bhá alo ne lukuluku na ekpí ang-o.

A Ngú nabhundja pépé má bhoto bhoto-o, yi bua m<sub>u</sub> me Eli gba Ebhe akpokpo ‘ngú pí m<sub>u</sub> pindji da? pindji ní?

- A akpokpo ngú pí m<sub>u</sub> pindji Ebhe? Yesu? Bu Bhobua?
- A ne engú inde ayo me m<sub>u</sub> kpata e? A ne bhende ayo me m<sub>u</sub> du tanga e?
- A ne lílí inde ayo me m<sub>u</sub> to ‘so e?
- Engú mo tanga e a'o pí m<sub>u</sub> ‘kpa ngasa?
- Engú mo atanga e agbele ‘dje m<sub>u</sub> lí mangua ‘ngú dho?
- K<sub>u</sub>k<sub>u</sub>l<sub>u</sub> ‘ngú lí Ebhe apa e pí m<sub>u</sub> bhábhá-o ngae dho?
- M<sub>u</sub> tí da mata natanga engú inde bhá bhuku

- bhedho?
- E) Lo luku bhuku inde akpokpo ‘ngú pí m<sub>u</sub> naali ko. Kodho kpadji sasa ne kpíla bal<sub>u</sub>a gba m<sub>u</sub>-o. Lipila nabhundja pépé nato pí ekpí koko. Kpokpo tod<sub>u</sub> tod<sub>u</sub>-o pí okpála koko.
  - F) Yo Ebhe.
  - G) To ‘so lílí gba Ebhe ne namene maka ani apa pí m<sub>u</sub> lie ko

**NDU ‘KPÍ HANA YI BUA MU ME**

- A. A ad<sub>u</sub>la nga bua ma naali ne lukuluku bhedho?
- B. Ngú bula nayo gba ma-a, Ebhe asuno m<sub>u</sub>ma mangua ‘ngú dho inde ayo me:
  - Ma adu tanga e, madji bua ma ka e?
  - Ma aziba ne nato ‘so lílí gba ani-e ka e?
  - Ma agie heni di ne nadhoge ani ka e?
  - Ma ayo ka Ebhe mangua ‘he dho?



• **Bhaka Dimandé gba Ebhe inde de m<sub>u</sub> masikpe amba m<sub>u</sub> kpokpo bua m<sub>u</sub> pí**



**‘Lí obhuku libhomu di ne bhá ndundundu sí**

Matié	<b>Mt</b>	Efeso	<b>Ef</b>	Ebele	<b>Eb</b>
Maloko	<b>MI</b>	Filipoi	<b>FI</b>	Djaki	<b>Djk</b>
Luka	<b>Lk</b>	Kolosai	<b>Kls</b>	1 Piele	<b>1Pi</b>
Djaa	<b>Dj</b>	1 Tesalonike	<b>1Te</b>	2 Piele	<b>2Pi</b>
Kulu	<b>KI</b>	2Tesalonike	<b>2Ts</b>	1 Djaa	<b>1Dj</b>
Loma	<b>Lm</b>	1 Timotio	<b>1Tm</b>	2 Djaa	<b>2Dj</b>
1Kolito	<b>1KI</b>	2 Timotio	<b>2Tim</b>	3 Djaa	<b>3Dj</b>
2 Kolito	<b>2KI</b>	Tito	<b>Tt</b>	Yuda	<b>Yd</b>
Galatia	<b>GI</b>	Filemo	<b>Flm</b>	Apokailipisi	<b>Ap</b>

**Mt 27:1-31** Ak<sub>u</sub>nda napa me:«Badha Ngali gba Yesu Kilisito maka lí Matié aye lie, alo djikpa bhisi ne ‘ká mananika, luku luku bini nakolo bhá ndjikpa bata ne ‘ká bini.



